

# Snagbee Desktop

## Installation

Like most Mac software, the desktop application is a simple drag and drop installation.

1. Visit our download page and click the download link to get the disk image file. The downloaded file will be named: Snagbee\_Mac\_#.#.#.dmg
2. Depending on your browser settings, the file may automatically open and the license agreement window will appear. If not, then locate the file in your Downloads folder and double click on it.
3. Accept the EULA, then drag the Snagbee icon into the Applications folder as instructed.
4. Close the Finder window and eject the disk image on your desktop. You can do this by selecting the Snagbee Mac icon on your desktop and choose File > Eject from the menu.
5. Snagbee is now installed in your Applications folder. BTW, you may want to add Snagbee to your dock for quick access.

## Getting Started

You must register your mobile device with a Snagbee desktop application before screen captures can be transferred. This ensures that your screen captures are sent to the correct device on your local network. The process is similar to pairing a Bluetooth headset with a phone. Both your computer and mobile device must be on the same local network.

### Registering your first device

1. Launch the Snagbee desktop application from your Applications folder. Since you have never registered a device, you will be greeted by a Welcome screen.
2. Launch the Snagbee mobile app and go to the Home tab. Tap the big question mark to register your device and get your passcode. **Stay on this screen while you complete the next step.**

3. On your computer, your device should appear in the list of devices in the Snagbee Preferences window. Highlight your device.
4. You will be prompted to enter the passcode. Type the passcode given to you in step 2, then click the Register button.

### Registering another device

If you plan to transfer screen captures to more than one device, then you need to register that device with the Snagbee desktop application. Launch the Snagbee mobile app and go to the Home tab. Tap Settings to obtain a passcode and enter the passcode just like you did in step 3 above.

### Transfers from multiple computers

The Snagbee mobile app allows transfers from more than one computer; just install the Snagbee desktop application on different computers and register your device with each installation.

### Important

Your data is never sent over the internet. The Snagbee desktop application transfers screen captures to devices that you register on your local network. We make every effort to ensure that your data will not be transferred to an unintended recipient; however, we do not encrypt your screen captures during transfer. Just be aware of this. Sending personal information to your device over an open or public network is not recommended.

## Features

- Screen captures are queued for transfer. So take some now, later, or whenever you want; then transfer them all at once.
- You can review, delete, name, annotate, and tag screen captures before and after transfer.
- You can add screen captures to your Favorites list for quick recall later.
- Screen captures are automatically deleted from your computer after they are transferred. This behavior can be modified for each capture.
- Send your screen captures to more than one device, or transfer screen captures from different computers to the same device.
- Copy captures to the clipboard or save them to your desktop.



## Selection Window

You position and size this window over the screen area that you wish to capture.

To show the Selection window:

- Launch Snagbee or
- Press Command-1 (⌘1) or
- Choose Window > Selection from the menu.

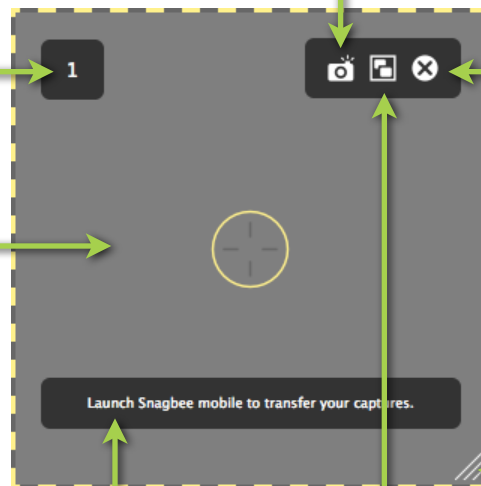
Click the Capture button to snag the selected area. This is the same as choosing Capture > Selected Area from the menu.

You may also hold down modifier keys while clicking this button to perform additional actions:

- Hold down the Command (⌘) key while clicking to place the screen capture on the clipboard. The screen will not be queued for transfer. This is the same as choosing Capture > To Clipboard.
- Hold down the Command (⌘) and Option keys while clicking to save the screen capture as a file on your desktop. The screen will not be queued for transfer. This is the same as choosing Capture > To File.
- Hold down the Option key while clicking to open the Manage Captures window immediately after the screen is captured.

The number of new captures awaiting transfer. Up to 99 new screen captures can be queued at one time.

Grab from anywhere to drag and position the selection window.



Closes the window. Based on your preferences, it may also quit Snagbee.

Grab to resize the selection window. The smallest screen capture you can take is 320 x 320, while the largest is 1024 x 1024.

Helpful messages are displayed here.

Click to open the Manage Captures window allowing you to review, name, annotate, and tag your screen captures prior to transferring them.



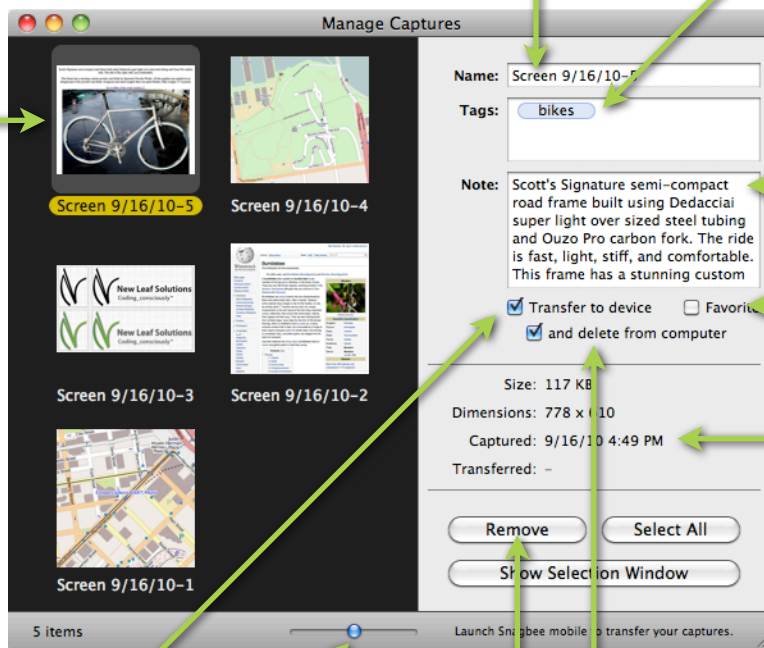
## Manage Captures

The Manage Captures window allows you to review queued captures and modify attributes before and after the transfer process.

To show the Manage Captures window:

- Press Command-2 (⌘2) or
- Choose Window > Manage Captures from the menu.

Select one or more screen captures to modify or delete. Individual screen captures can be copied to the clipboard.



Give your screen captures useful names.

Define tags on the fly. Tags can be used on your mobile device to organize screen captures.

In the iPhone app, notes are searchable; and URLs and phone numbers are clickable.

Earmark selected captures as Favorite.

Statistics for fun.

Use the slider to reduce or enlarge the thumbnails.

Permanently deletes selected images. Does not delete images from your mobile device.

Designate whether or not selected captures are deleted after transferring. If a capture is not deleted after transferring, you can recheck this option to transfer the capture again to another device.

*Note: If you choose to re-transfer a capture and the capture already exists on the mobile device, then the capture's name, tags, note, and favorite state are updated on the mobile device.*

Designate whether or not selected captures are deleted from your computer after they are transferred. If you want to send a capture to multiple devices, then uncheck this option so that a capture remains on your computer after the transfer is performed. You can then transfer the capture again to another device by checking *Transfer to device*.



## Preferences

Open the Preferences window to customize how Snagbee behaves, or to register additional devices.

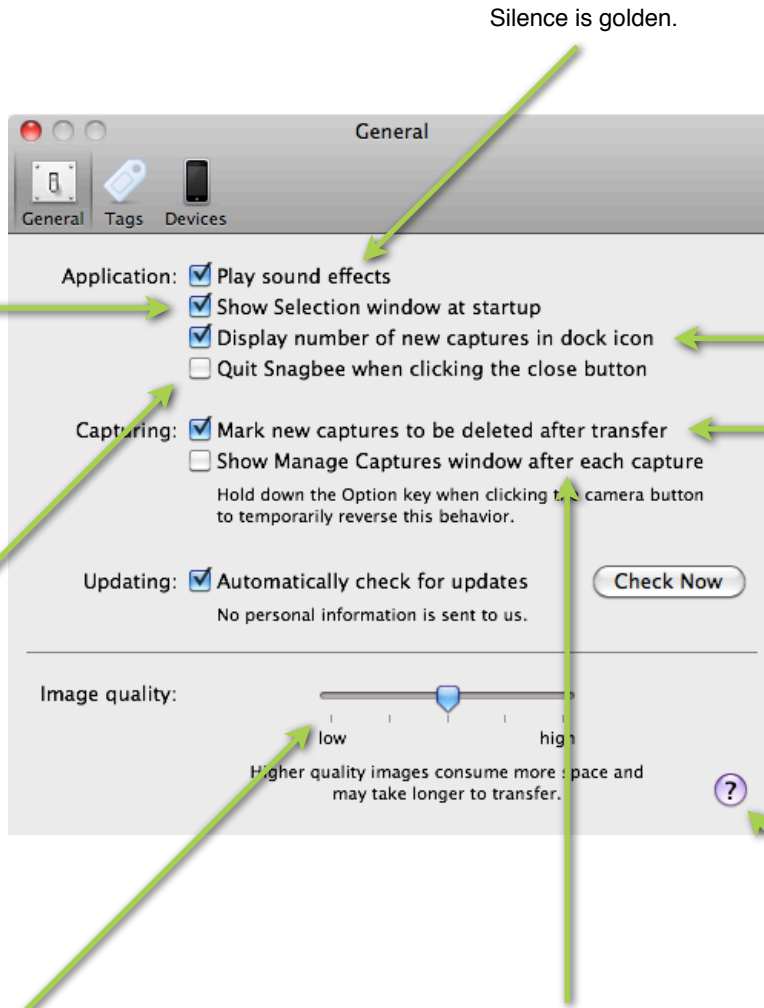
To show the Preferences window:

- Press Command-comma (⌘,) or
- Choose Snagbee > Preferences from the menu.

Display the Selection window when Snagbee is launched. Nice to uncheck if you add Snagbee to your Startup Items.

Controls how the Close button behaves on the Selection window. If checked, then Snagbee quits when you click the Close button. Remember if Snagbee desktop is not running, your images will not be transferred when you launch Snagbee mobile.

All screen captures are stored as JPEG images. This setting allows you to adjust the image compression quality from 30% (low) to 70% (high). The center default setting is 50%.



Silence is golden.

Display the number of newly queued screen captures in the dock icon.

By default, captures are automatically deleted after they are transferred to your mobile device. This setting can change that behavior so that captures are normally retained after transfer.

Show Quick Help

Let's say that you want to immediately assign tags or enter a note after each capture is taken. This setting can support that workflow by automatically opening the Manage Captures window after you take a new screen capture.



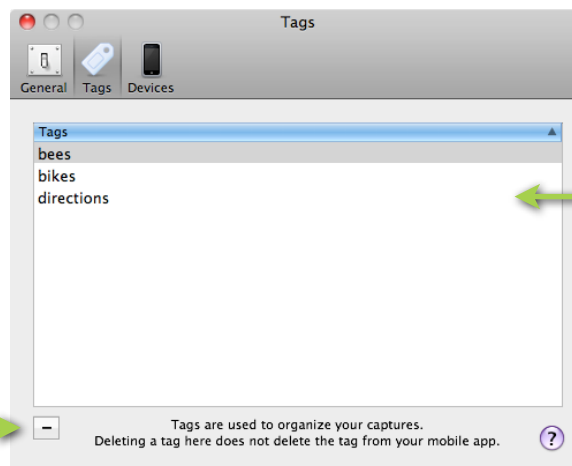
## Preferences (cont.)

Open the Preferences window to customize how Snagbee behaves, or to register additional devices.

To show the Preferences window:

- Press Command-comma (⌘,) or
- Choose Snagbee > Preferences from the menu.

You may delete tags so they are not auto-suggested in the Tags field. Deleting a tag here does not delete it from your mobile device; however, it does disassociate it from captures that are currently using it in the desktop application.



These are tags you defined in Snagbee desktop. Tags assigned to a capture will be added to Snagbee mobile.

Lists devices running Snagbee mobile. To register a new device, you must get a passcode from the Snagbee mobile app.



Remove devices that you no longer plan to use. For instance, you may decide to send captures to a friend's device running Snagbee mobile and later choose to prevent this.

